



# School Tours

## Winter/Spring 2016

---



The  
Robert  
McLaughlin  
Gallery



## Teachers' Corner

### At the Gallery or In-Classroom

The RMG is an invaluable community resource for teachers. Boost your curriculum with our robust arts-enrichment programming. Gallery tours, studio activities, and in-classroom sessions are delivered by our knowledgeable and enthusiastic educators. Developed to reflect our current exhibitions and with the Ontario Curriculum in mind, our programs nurture the use of critical analysis skills while inspiring and giving confidence to students' own creativity.

Our key objectives for students of all ages and abilities:

- + Look at, think and talk critically about Canadian art
- + Explore, develop and advance creativity, imagination and art-making skills
- + Expand an understanding of modern and contemporary Canadian art by accessing the RMG's permanent collections and special exhibitions.

In planning your RMG experience, please consider our **combine and save** discount options so you can follow up your initial visit to the gallery with a corresponding in-school session. A gallery educator will visit your classroom to engage students in critical viewing, and thinking, and hands-on art activities.

#### **To book, please contact:**

Jennifer Treleaven, Education Coordinator  
905 576 3000 Ext. 114  
jtreleaven@rmg.on.ca





## About Us

The RMG is a vibrant, engaging public art museum located in Oshawa's civic centre. An external agency of The City of Oshawa, the RMG is the largest gallery in Durham Region and occupies an inspired 36,000 square foot building designed by noted architect Arthur Erickson.

Featuring a Permanent Collection of over 4,500 works and five galleries of diverse and changing contemporary and historical exhibitions, The RMG holds an important collection of modern Canadian abstraction and the largest holdings of works by Painters Eleven.

The gallery has significant collections of Canadian contemporary art including public art and an active acquisitions program. The Thomas Bouckley Collection, which represents archival photographic records of over 3,000 images of Oshawa and the region, provides a vital link in connecting the community with local history.

A roster of dynamic public and educational programs, thriving volunteer program, gallery shop, inspiring event spaces, art archive and library, artist-in-residence lab, and art studio comprise the gallery's many rich and diversified assets.



# Winter/Spring 2016 Exhibitions



Dorothy Knowles, *Moving Clouds OC-004-83*; 1983; oil on canvas;  
Gift of the artist, 2012

## Moving Image

Works from the Permanent Collection

Until August 20, 2016

This exhibition explores the RMG's collection of over 4,500 by investigating the theme of movement, as explored through painting, sculpture, photography, drawing, installation and video. The collection of selected art works examines our ideas of movement through colour, space, landscape, the body and migration.



Unidentified portrait from the Thomas Bouckley Collection.

## Their Stories

Unidentified Portraits from the Thomas Bouckley Collection

Until May 1, 2016

Photographic portraits are taken to document and remember one's life and can, in the process, capture the essence of a person's character. Sadly, the identities of many historic portraits have been lost over time. We asked the community to help tell the stories of ten unidentified portraits in the Thomas Bouckley Collection. The responses we received were creative and diverse!



Holly King, *Chalk Shoreline*, Photograph, 2012

## Holly King: Edging Towards the Mysterious

Until April 17, 2016

This ten-year mid-career retrospective of the photographs of Holly King is comprised of four of her most recent series: *Twisted Roots*, *Mangroves: Floating Between Two Worlds*, *Grand Canyon: Unscene* and the recently completed *English Cliffs* series. Two of the series more clearly represent her constructed work, while the other two are based more obviously in reality. King states that her photographs are a "celebration of sublime beauty in nature."



# Winter/Spring 2016 Exhibitions (continued)



Harry Rowed (Canadian, b.1907) Women munitions workers enjoy a lunch-time walk with friends at the Dominion Arsenals Ltd. Plant, Quebec City (From left to right: H el ene Perry, Celine Perry, Roberte Perry, Alphonsine Roy, Laurette Maurice) 24 August 1942 Contemporary print from vintage negative National Film Board of Canada. Phototh eque / Library and Archives Canada e000760791

## The Other NFB: The National Film Board of Canada's Still Photography Division, 1941-1971

Until May 1, 2016

The National Film Board of Canada (NFB) has long been acclaimed for documentary, animated and feature films, which are among Canada's iconic cultural products and exports. But few Canadians know that during a pivotal period in the country's history—the mid-twentieth century—the NFB also functioned as the country's official photographer.



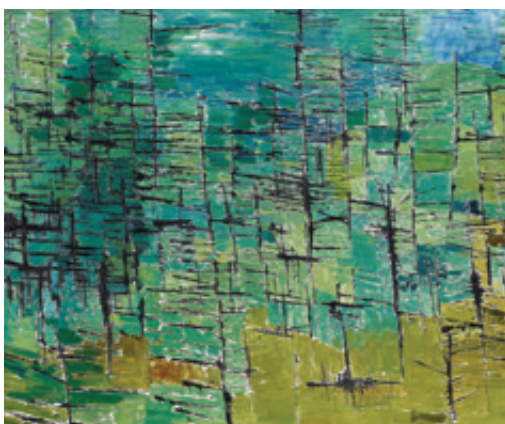
Pegi Nicol MacLeod; *Jane*; c.1939; watercolour on paper; Purchase, 1981

## Ask Children

### Selections from the Permanent Collection

Until April 24, 2016

Childhood is a universal human experience but it isn't experienced in a universal way. The works reference religious themes, family dynamics, traditions of schooling and discipline, and the shifting cultural ideals around children's physical, social, and emotional development across both time and socio-geographic lines. Some works depict play and leisure, while others present sketches of a working class childhood.



Kazuo Nakamura (1926 - 2002) *Forest*, 1953 Oil on masonite Gift of Charles E. McFaddin, 1974

## Painters 11

### Selections from the Permanent Collection

Ongoing

The RMG proudly holds Canada's largest collection of works by Painters Eleven, primarily as a result of significant donations to the permanent collection by Alexandra Luke. At least eleven of these works are on display at all times in our Painters Eleven gallery.





## JK to Grade 2

### Combine and Save Discount Options:

\$12/student for Gallery Visit + Classroom Visit

\$16/student for Gallery Visit + Classroom Visit + Special Exhibition Visit

### Gallery Visit: “Art Starts”

**\$6/student**

90 mins. 10-60 students

**Gallery:** In response to our current permanent collection exhibition, *Moving Image*, look at and explore portrait, landscape, abstraction and sculptural artworks with our popular (and newly expanded) sensory boxes in this fun and engaging program.

**Studio Option 1:** Create a mixed media mobile using a variety of materials.

**Studio Option 2:** Create a water-soluble oil pastel landscape inspired by current exhibitions.

### Classroom Visit: “Art Starts”

**\$10/student**

90 mins. 15-25 students

**Summary:** What is your story? Explore self, individual, group portraits and narrative paintings in a hands-on and interactive presentation. Discuss artists’ use of colour and other elements of art to communicate ideas of emotion and individual expression.

**Activity:** Create a layered self-portrait artwork using a variety of materials.





## Grades 3-5

### Combine and Save Discount Options:

\$14/student for Gallery Visit + Classroom Visit

\$18/student for Gallery Visit + Classroom Visit + Special Exhibition Visit

### Gallery Visit A: “Canadian Art: Abstraction in Canada”

**\$7/student**

90 mins. 10-60 students

**Gallery:** The tour will enable students to look at and explore abstract artists’ approach to the art making process, and discuss art as a way to express ideas, beliefs and interests.

**Studio:** Our studio activity will focus on abstract acrylic painting.

### Classroom Visit A: “Canadian Art: The Canadian Landscape”

**\$10/student**

90 mins. 15-30 students

**Summary:** This presentation explores historical and contemporary artists’ approach to painting the Canadian landscape. Through discussion and an interactive presentation, we will uncover how various artistic interpretations have shaped Canadian identity.

**Activity:** Hands-on activities may include either oil pastel landscapes inspired by the Group of Seven or printmaking inspired by built environments in their community.

### Gallery Visit B: “Art Detectives”

**\$7/student**

90 mins. 10-60 students

**Gallery:** Explore current exhibitions to learn how to “read” paintings through discussion and engaging gallery activities.

**Studio Option 1:** Create a Bas relief sculpture inspired by the exhibitions.

**Studio Option 2:** Create a 3D coil sculpture.

Continued...





## Grades 3-5 (continued)

### **Classroom Visit B: “Art Detectives”**

**\$10/student**

90 mins. 15-30 students

**Summary:** Look at how Canadian art has changed over time while exploring ideas of multiculturalism in art.

**Activity:** Transform a two-dimensional realistic image into a three-dimensional abstraction.

### **Gallery Visit: “Special Exhibition”**

**\$7/student**

90 mins. 10-60 students

**Highlighting:** *Holly King: Edging Towards the Mysterious* exhibition and *The Other NFB* exhibition until April 15.

**Gallery:** Using an interactive activity, students will explore two photography based exhibitions and discover real and imagined spaces as well as Canada’s history through promotional images.

**Studio:** Students will create a mixed media landscape inspired by the exhibitions.







## Grades 6-8

### Combine and Save Discount Options:

\$24/student for Gallery Visit + Classroom Visit

\$28/student for Gallery Visit + Classroom Visit + Special Exhibition Visit

### Gallery Visit: “Making Observations and Connections”

**\$15/student**

5 hrs. 30 students maximum

**Gallery:** Movement, Migration and Motivation. Look at, explore and discuss the permanent collection’s historical and contemporary artworks as it relates to ideas of movement and migration. Continue the exploration through current exhibition to explore various artists’ motivation to use photography for promotional and aesthetic purposes.

**Studio:** Create both a two dimensional and three dimensional artwork inspired by the exhibitions.

### Classroom Visit: “Continue the Conversation”

**\$12/student**

3 hrs. 30 students maximum

**Summary:** Investigating “Then and Now”, use analytical skills to delve into the history of the Durham Region, examine photographs by comparing them from present day to the past.

**Activity:** Create a mixed media artwork considering personal “Then and Now” stories.

### Gallery Visit: “Special Exhibition”

**\$7/student**

90 mins. 10-60 students

**Highlighting:** *Holly King: Edging Towards the Mysterious* exhibition and *The Other NFB* exhibition until April 15.

**Gallery:** Using an interactive activity, students will explore two photography-based exhibitions and discover real and imagined spaces as well as Canada’s history through promotional images.

**Studio:** Students will create a mixed media landscape inspired by the exhibitions.





## Grades 9-12

### Combine and Save Discount Options:

\$24/student for Gallery Visit + Classroom Visit

\$28/student for Gallery Visit + Classroom Visit + Special Exhibition Visit

### Gallery Visit: "The Figure"

**\$15/student**

5 hrs. 30 students maximum

**Gallery:** Tour the permanent collection and discuss both historical and contemporary artworks with a specific focus on the figure. In the studio, create a large figurative artwork using various drawing materials and easels.

**Studio:** Students will create two and three-dimensional figurative artworks that reflect their own response to their gallery experience. Optional: 2hr live model additional \$50 fee

### Classroom Visit: "Continue the Conversation"

**\$12/student**

3 hrs. 30 students maximum

**Summary:** Using a presentation, explore and discuss community history through photographs with the RMG Curator of The Thomas Bouckley Collection.

**Activity:** Drawing from unidentified photographs from the Thomas Bouckley Collections, students will experiment with narrative and respond using mixed media materials.

### Gallery Visit: "Special Exhibition "

**\$7/student**

90 mins. 10-60 students

**Highlighting:** *Holly King: Edging Towards the Mysterious* exhibition and *The Other NFB* exhibition until April 15.

**Gallery:** What is the role of the photographer? Investigate current exhibitions and discuss various approaches and uses of photographs. Discover real and imagined places and pictures, and discuss the formation of a Canadian identity through promotional imagery.

**Studio:** Students will create an interactive mixed-media collage inspired by the exhibitions.





Jock Macdonald, *Flood Tide*, 1957 (detail), Collection of The Robert McLaughlin Gallery, purchase, 1970

## Circulating Exhibitions

### Blue Bag Poster Program

The Circulating Exhibitions program is a dynamic resource developed by the RMG to help bring art to your school. These themed exhibitions are curated to highlight key lessons in art history, while addressing specific components of the Ontario Visual Arts Curriculum.

There are a wide variety of themes to choose from and each portfolio includes five framed colour images, a detailed list of artworks and an activity sheet. The RMG's Circulating Exhibitions program is provided free of charge to all schools in the Durham Region school boards.

### Choose from our 37 Circulating Exhibitions:

#### Strong Canadian Content

First Nations Art Series  
Group of Seven Series  
Canadian Abstraction  
Tom Thomson  
RMG Collection Series

#### International Artists

Renoir  
Matisse  
Monet  
Van Gogh

#### Art Styles

Cubism  
Impressionist Artists  
Pointillism  
American Abstraction

#### Themes in Art

Still Life  
Narratives  
Portraits  
Sculptures  
Interior Spaces

#### Varied Themes

Colour  
Perspective

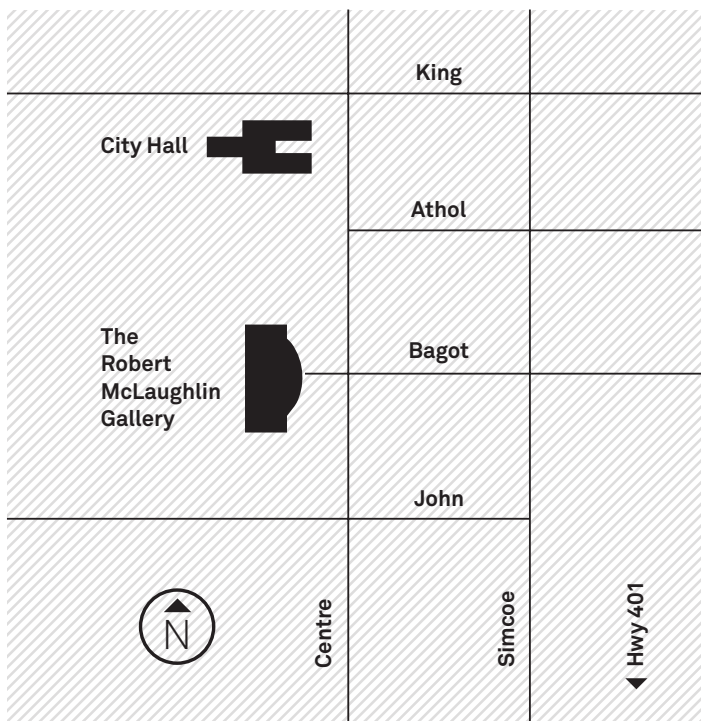


**To register for the Blue Bag Poster Program  
please visit [rmg.on.ca](http://rmg.on.ca)!**





# The Robert McLaughlin Gallery



72 Queen Street, Civic Centre  
 Oshawa, Ontario L1H 3Z3  
 905.576.3000  
[communications@rmg.on.ca](mailto:communications@rmg.on.ca)  
[www.rmg.on.ca](http://www.rmg.on.ca)

**Parking Available**

Admission by Donation

**Accessibility**

To make a reservation or discuss an accommodation please contact Leslie Menagh at [lménagh@rmg.on.ca](mailto:lménagh@rmg.on.ca)

**Gallery Hours**

Mon, Tues, Wed, Fri  
 10am-5pm  
 Thurs  
 10am-9pm  
 Saturday  
 10am-4pm  
 Sunday  
 12noon-4pm

Open 7-10pm for RMG Fridays on the first Friday of every month.

**Office Hours**

Monday through Friday  
 9am -5pm

**Connect with Us!**



The RMG is wheelchair accessible and manual wheelchairs are available.



ASL and sign language interpretation may be available upon request.



Large Print

Large Print, Tactile Tours & Audio Description are available upon request.